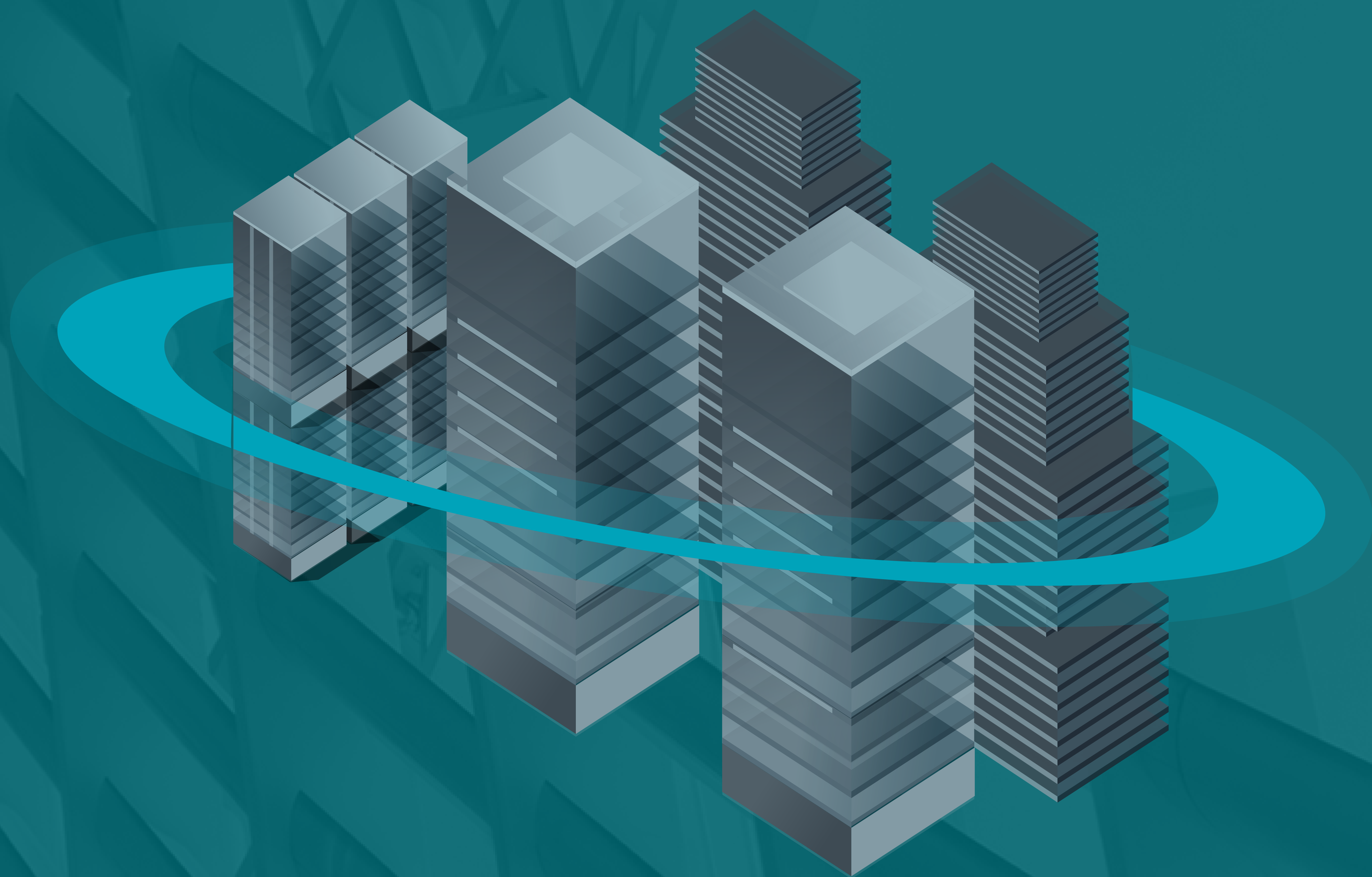


Cyber**Proof**<sup>®</sup>  
A UST Company

Google Cloud

Are you cyber-ready?  
Interested in risk  
mitigation?



CyberProof and Google Cloud provide  
better security, together

1

# Anticipate



## Threat Intelligence

Obtain targeted, actionable insights from Cyber Threat Intelligence (CTI) analysts on threat exposure across the clear, deep and dark web, so you can anticipate and react to the changing threat landscape. CyberProof's team leverages Mandiant, VirusTotal, and other solutions.

[READ MORE →](#)



## Vulnerability Discovery & Prioritization

Identify and prioritize vulnerabilities based on both internal infrastructure and external threat data.

[READ MORE →](#)

# 2

## Detect



### Log Collection

Onboard security and event logs that align to prioritized threat scenarios and business risks. Leverage Google's Hot Data capabilities to identify business-critical data. Filter and tag logs before they are ingested into the Security Analytics platform for optimized threat detection.

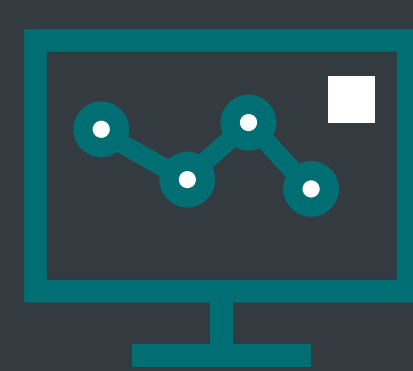
[READ MORE →](#)



### Threat Hunting

Proactively detect and isolate advanced threats that escape security solutions, with a dedicated Threat Hunting team. Utilize Google Cloud's BigQuery to analyze data using machine learning, geospatial analysis, and business intelligence.

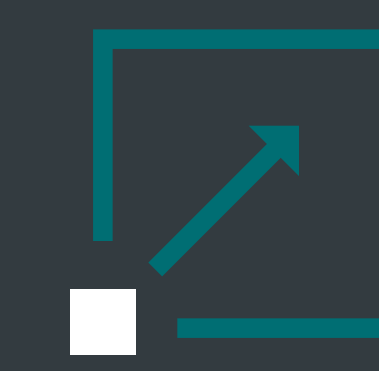
[READ MORE →](#)



### Cloud-native SOC Services Platform

A cloud-native SOC services platform with a layer that is Google Security Orchestration, Automation and Response (SOAR) - that integrates with both legacy and cloud-native Security Analytics provides a single pane of glass – improving the efficiency of security operations in organizations transitioning to cloud security monitoring.

[READ MORE →](#)



### Managed Extended Detection and Response (XDR)

Extend visibility and respond faster with Managed XDR, a complete service that identifies intrusions across your enterprise as you migrate to the cloud. Leverage the Google Cloud Security AI Workbench, a security-specific large language model (LLM) providing visibility into the cyber threat landscape.

[READ MORE →](#)

# 3

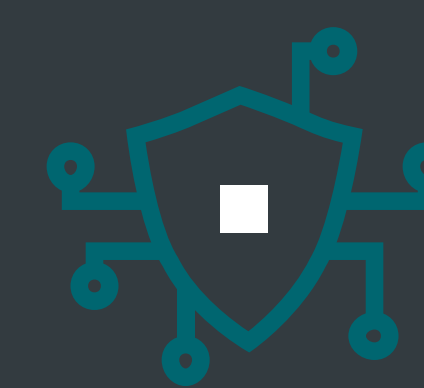
## React



### Alert & Incident Management

Handle alerts and incidents with a hybrid team of expert analysts and your internal team.

[READ MORE →](#)



### Incident Response

Assess, contain, eradicate, and recover from critical security incidents – minimizing business impact and returning the enterprise to normal operations.

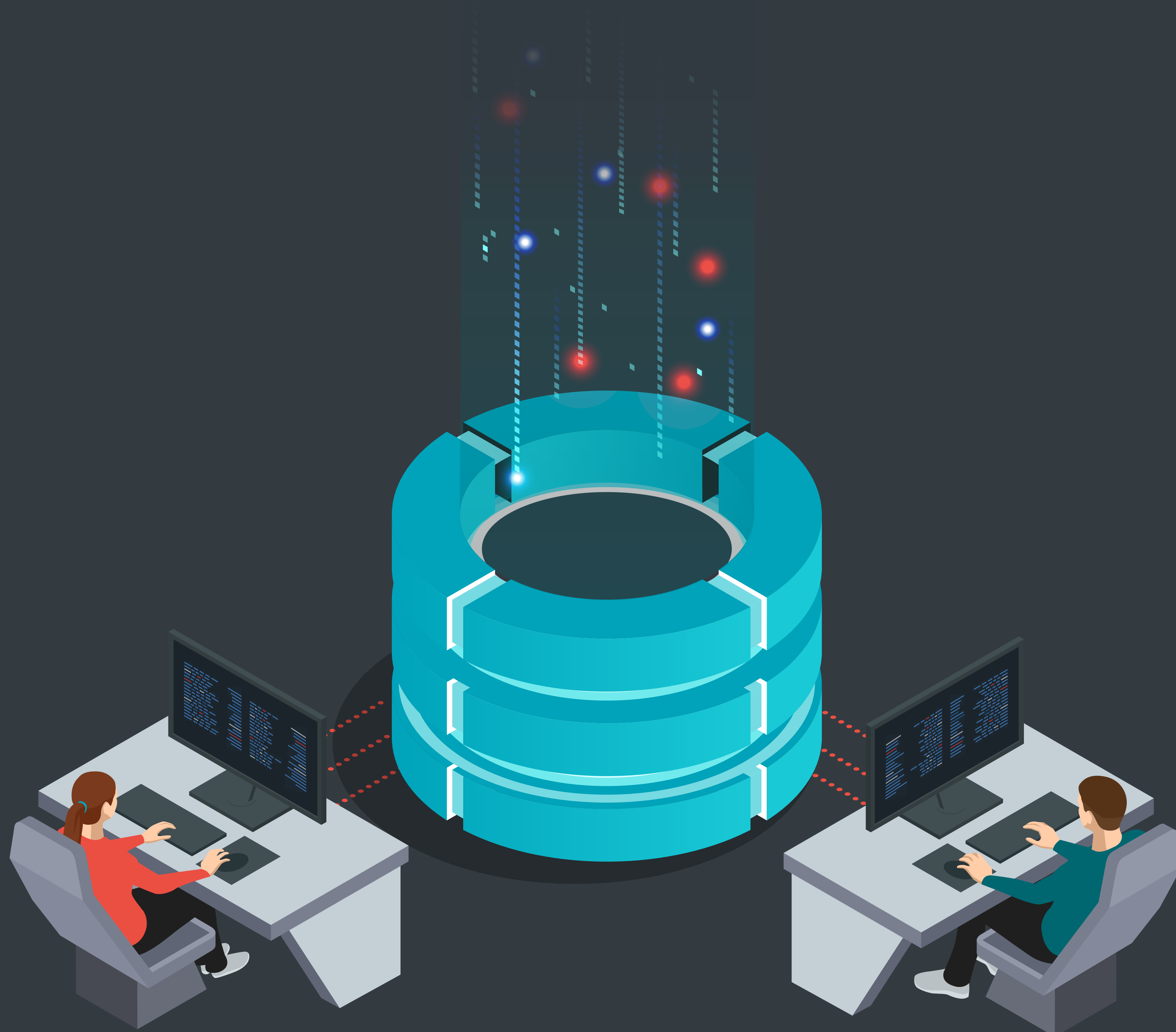
[READ MORE →](#)



### Digital Forensics

Establish the root cause of an incident and its full impact by reconstructing events – analyzing evidence from machines and the network.

[READ MORE →](#)



# 4

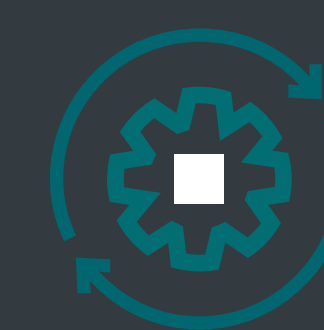
## Improve



### Use Case Management (UCM)

Develop and maintain up-to-date detection rules & playbooks aligned with relevant use cases. Utilize both Google's off-the-shelf use cases and CyberProof's customized use cases.

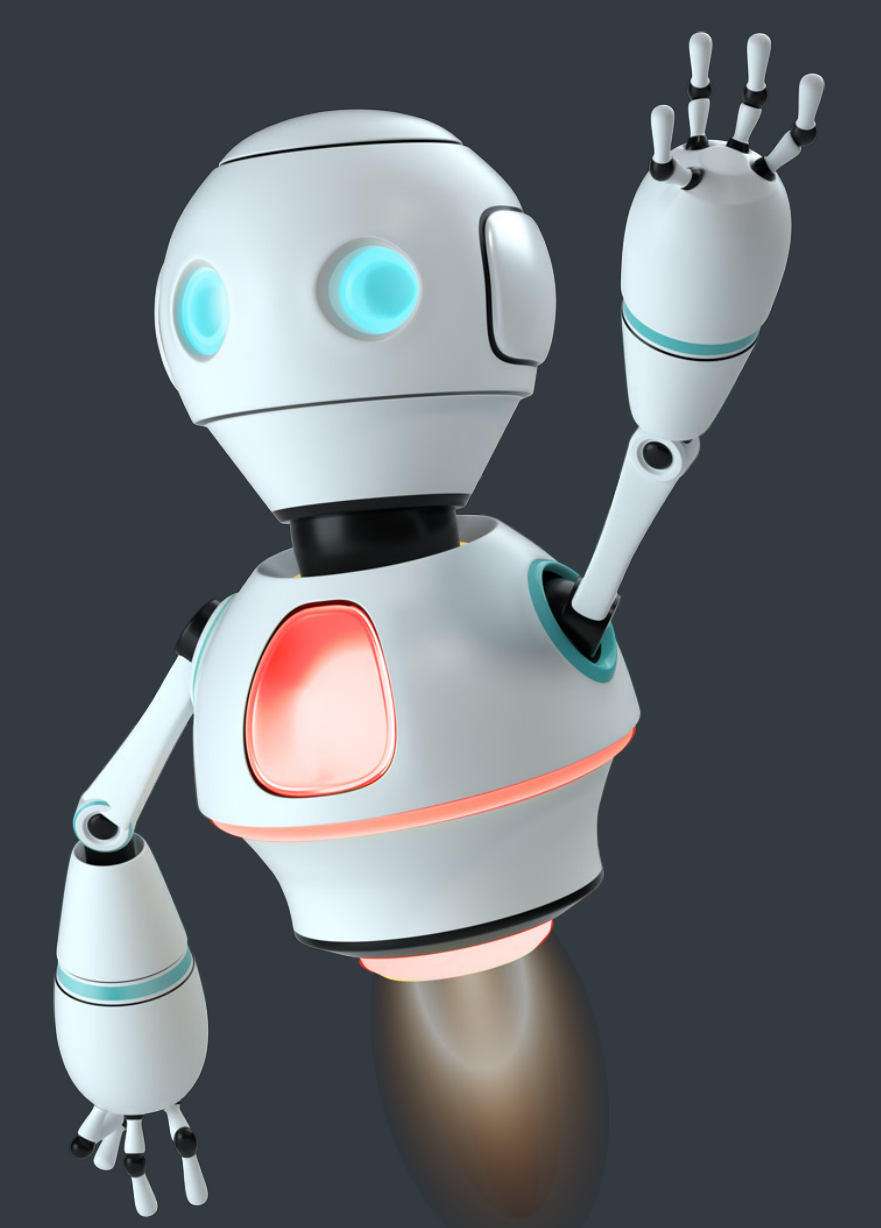
[READ MORE →](#)



### Orchestration & Automation

Increase the speed of detection & response through alert enrichment and by leveraging artificial intelligence and machine learning. Google's capabilities increase automation from 40 to 80 percent.

[READ MORE →](#)



**CyberProof**<sup>®</sup>  
A UST Company

**Google Cloud**

**Ready to speak  
to an expert?**

**CONTACT US →**