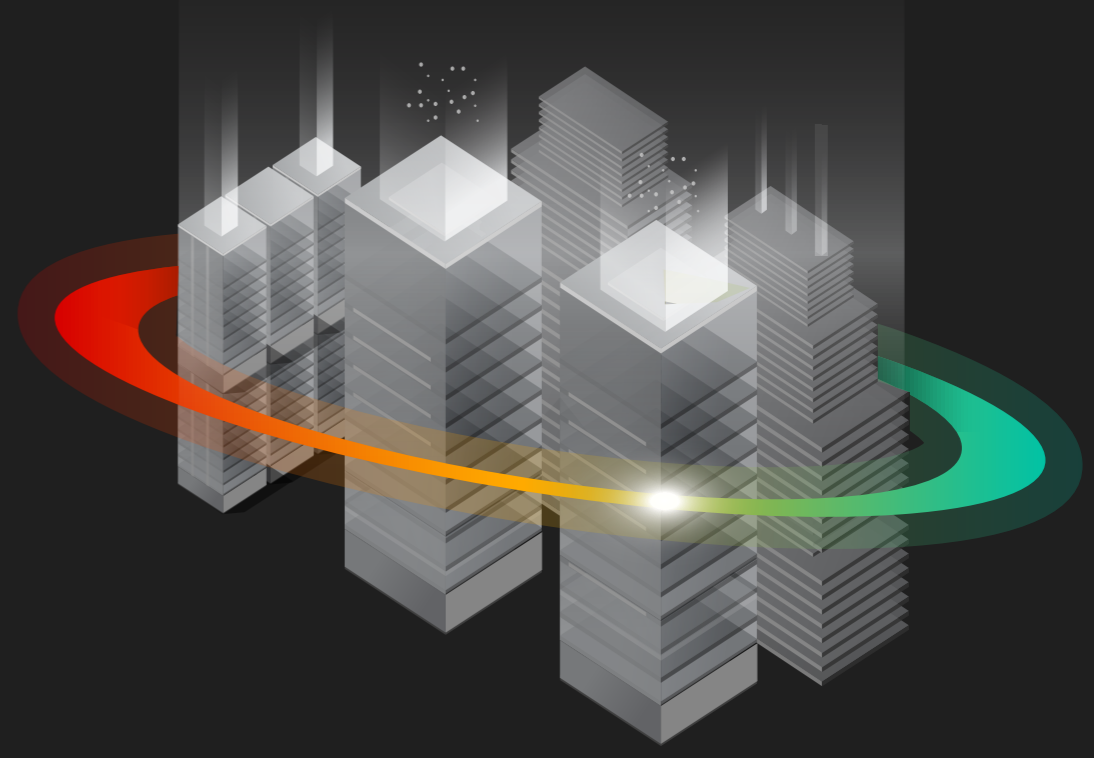


How CyberProof Protects Enterprises from Cyber Threats



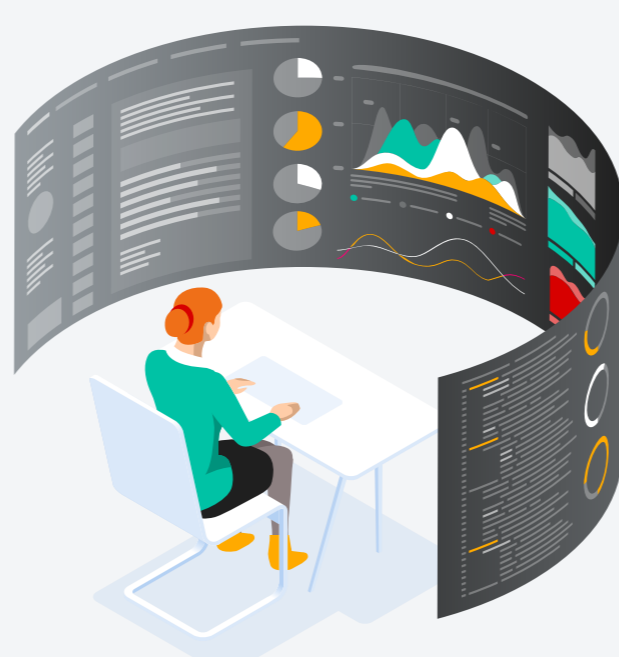
1

ANTICIPATE



Threat Intelligence

Obtain targeted, actionable insights from CyberProof's Cyber Threat Intelligence (CTI) analysts on threat exposure across the clear, deep and dark web, so you can anticipate and react to the changing threat landscape.



Vulnerability Discovery & Prioritization

Identify and prioritize vulnerabilities based on both internal infrastructure and external threat data.



Log Collection

Onboard security and event logs that align to prioritized threat scenarios and business risks. Filter and tag logs before they are ingested into the Security Analytics platform for optimized threat detection.



CyberProof Defense Center (CDC) platform

Our co-sourced, cloud-based SOC services platform integrates with both legacy and cloud-native Security Analytics platforms. It enables a single pane of glass for organizations making the transition to cloud security monitoring.

2

DETECT



Threat Hunting

Proactively detect and isolate advanced threats that escape security solutions, with CyberProof's dedicated Threat Hunting team.



Endpoint Detection & Response (EDR)

Extend visibility and respond faster with EDR at workstations, servers, and other endpoints.



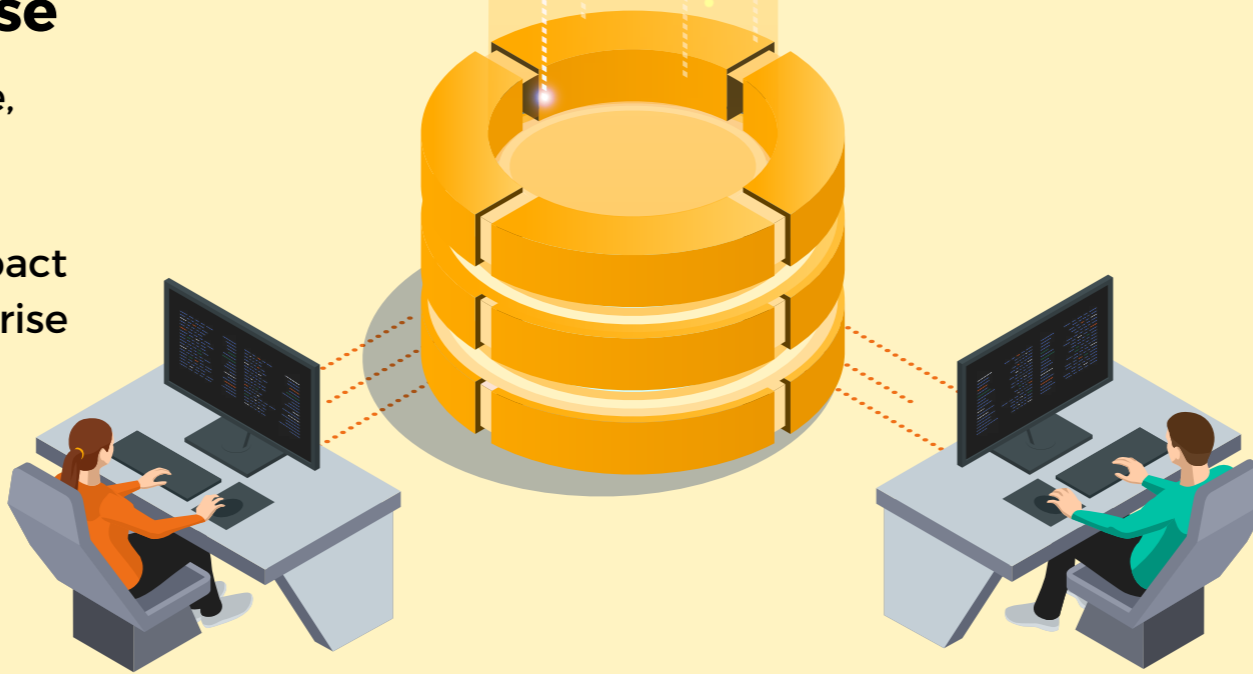
Alert & Incident Management

Handle alerts and incidents with a hybrid team of CyberProof's expert analysts and your internal team.



Incident Response

Assess, contain, eradicate, and recover from critical security incidents - minimizing business impact and returning the enterprise to normal operations.



3

REACT



Digital Forensics

Establish the root cause of an incident and its full impact by reconstructing events - analyzing evidence from machines and the network.

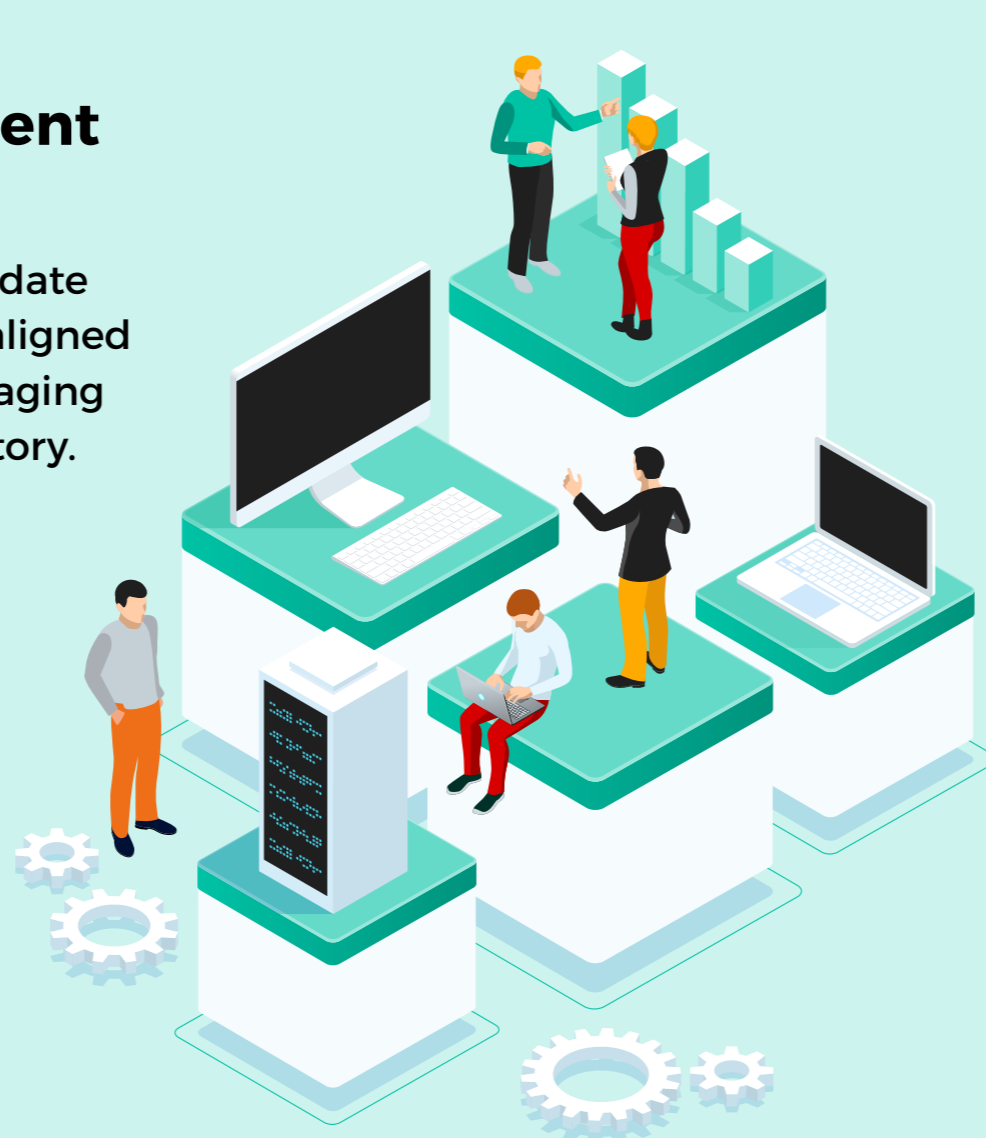
4

IMPROVE



Use Case Management (UCM)

Develop and maintain up-to-date detection rules & playbooks aligned with relevant use cases, leveraging the CyberProof Use Case Factory.



Orchestration & Automation

Increase the speed and efficiency of detection and response through alert enrichment, and with initial response activities done by SeeMo, CyberProof's virtual analyst.

